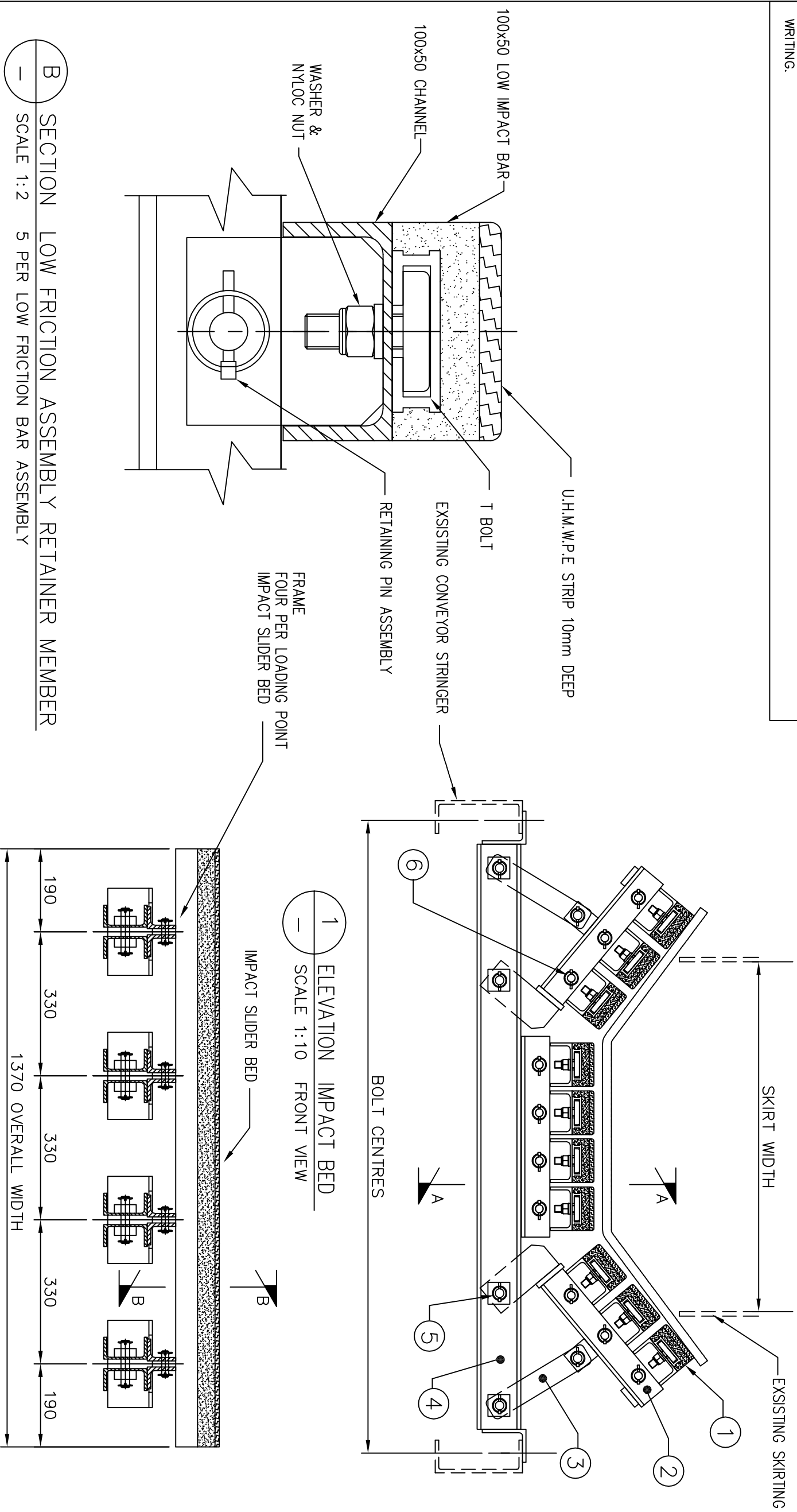


ENGINEERS RESTRICTED INFORMATION

THIS DRAWING AND ITS CONTENTS ARE BASED UPON TECHNOLOGY DEVELOPED BY DYNA ENGINEERING AND IS CONFIDENTIAL. THEY ARE SUBJECT TO RETURN ON DEMAND AND MAY NOT BE COPIED OR DISCLOSED TO ANY THIRD PARTY OR USED DIRECTLY OR INDIRECTLY FOR ANY OTHER PURPOSE THAN AS EXPRESSLY DETERMINED BY DYNA ENGINEERING, CONFIRMED IN WRITING.



B SECTION LOW FRICTION ASSEMBLY RETAINER MEMBER
SCALE 1:2 5 PER LOW FRICTION BAR ASSEMBLY

1 ELEVATION IMPACT BED
SCALE 1:10 FRONT VIEW

A SECTION IMPACT BED
SCALE 1:10 SIDE VIEW

- NOTES**
- ALL METAL STRUCTURAL COMPONENTS ARE HOT DIPPED GALVANIZED AFTER FABRICATION
 - ALL METAL FASTENERS AND FIXTURES ELECTRO GOLD PASSIFIED
 - ALL POLYMER AND RUBBER MATERIAL IN NATURAL STATE.

ITEM	DESCRIPTION/DWG NO.	P/N	QTY	No.	REVISION	DRN.	CHD.	DATE
1	LOW FRICTION BAR ASSEMBLY		10					
2	SIDE ARM ASSEMBLY		8					
3	SUPPORT BRACE		8	D	UPDATED T BOLT & PIN DETAILS	GG	BS	07/10/06
4	MAIN FRAME		8	C	UPDATED TITLE BLOCK	GG	BS	22/02/06
5	RETAINING PIN (LONG)		24	B	DETAIL REVISED	TGH	TGH	13/07/00
6	RETAINING PIN (SHORT)		40	A	ISSUED FOR MANUFACTURE	TGH	JM	12/08/98

CLIENT	TITLE
	IMPACT BAR ASSEMBLY FOR 1200mm BELT WIDTH/35° TROUGHING ANGLE GENERAL ARRANGEMENT

CAD'S NO. :

DESIGN	DYNA
CHKD.	
DRN.	TGH
SCALE	AS SHOWN
DATE	10/08/98

DYNA Engineering
P.O. BOX 518, DIANELLA WA 6059
TEL: (08) 9473 4300 FAX: (08) 9473 4399
DWG. NO. GA-0045 REV. D / A3
GENERAL CUTTING TOLERANCE ±0.25 ABSOLUTE